

Plant responses to drought



Debbie Swarthout

Biology Department

616 - 3957355

swarthout@hope.edu

B.Sc.(Hons) 1990: University of Cape Town

M.Sc. 1993: University of Cape Town

Ph.D. 1999: University of Kansas

Area of expertise: Regulation of water status, photosynthesis and plant growth.

Grants and awards

NSF - MRI/RUI Program 2003-2006

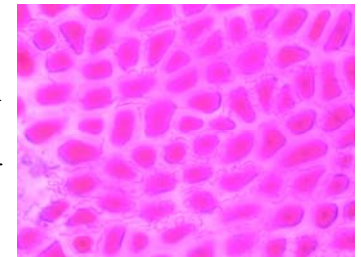
NSF- CRUI Program - 2004-2008

Oral presentation: Swarthout et al.

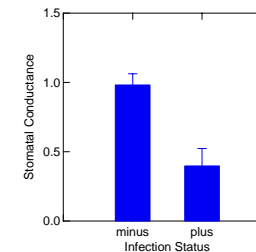
Effects of aphids on stomatal conductance and photosynthesis in tall fescue grass.

ESA Meeting, Montreal, Canada (August 2005)

Acknowledgements: NSF



Plants with fungus (E+) operate at a lower stomatal aperture



How does the fungus regulate the plant biochemically?