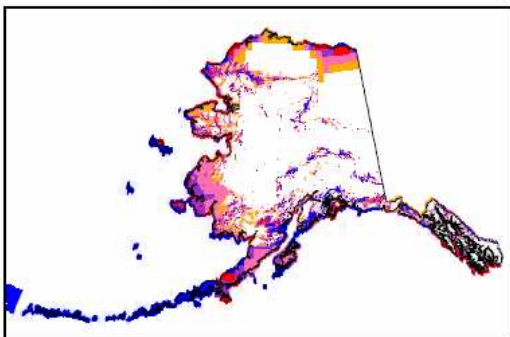
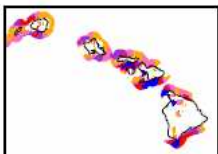
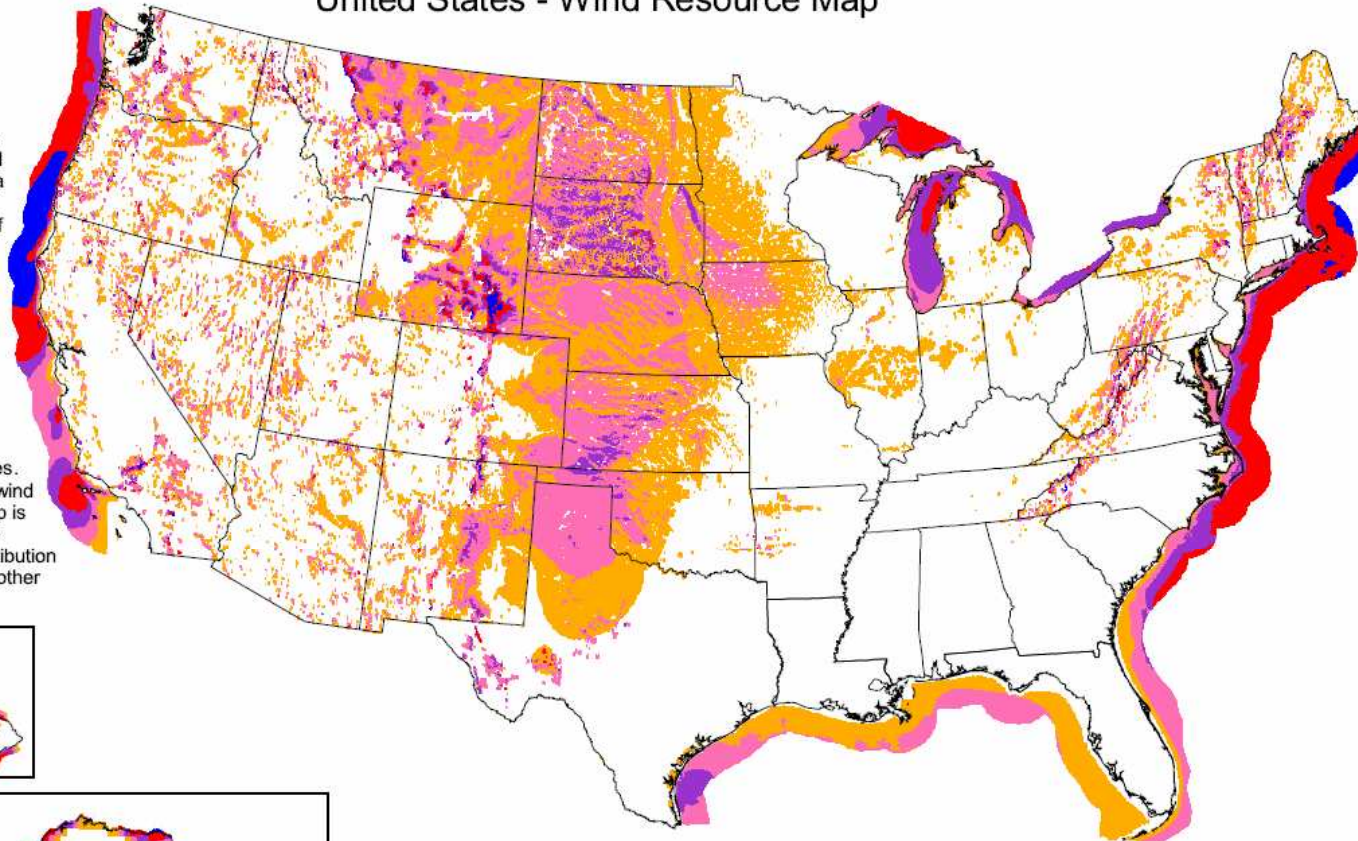


## United States - Wind Resource Map

This map shows the annual average wind power estimates at a height of 50 meters. It is a combination of high resolution and low resolution datasets produced by NREL and other organizations. The data was screened to eliminate areas unlikely to be developed onshore due to land use or environmental issues. In many states, the wind resource on this map is visually enhanced to better show the distribution on ridge crests and other features.



| Wind Power Classification |                    |                                    |                                     |                                     |
|---------------------------|--------------------|------------------------------------|-------------------------------------|-------------------------------------|
| Wind Power Class          | Resource Potential | Wind Power Density at 50 m $W/m^2$ | Wind Speed <sup>a</sup> at 50 m m/s | Wind Speed <sup>a</sup> at 50 m mph |
| 3                         | Fair               | 300 - 400                          | 6.4 - 7.0                           | 14.3 - 15.7                         |
| 4                         | Good               | 400 - 500                          | 7.0 - 7.5                           | 15.7 - 16.8                         |
| 5                         | Excellent          | 500 - 600                          | 7.5 - 8.0                           | 16.8 - 17.9                         |
| 6                         | Outstanding        | 600 - 800                          | 8.0 - 8.8                           | 17.9 - 19.7                         |
| 7                         | Superb             | 800 - 1600                         | 8.8 - 11.1                          | 19.7 - 24.8                         |

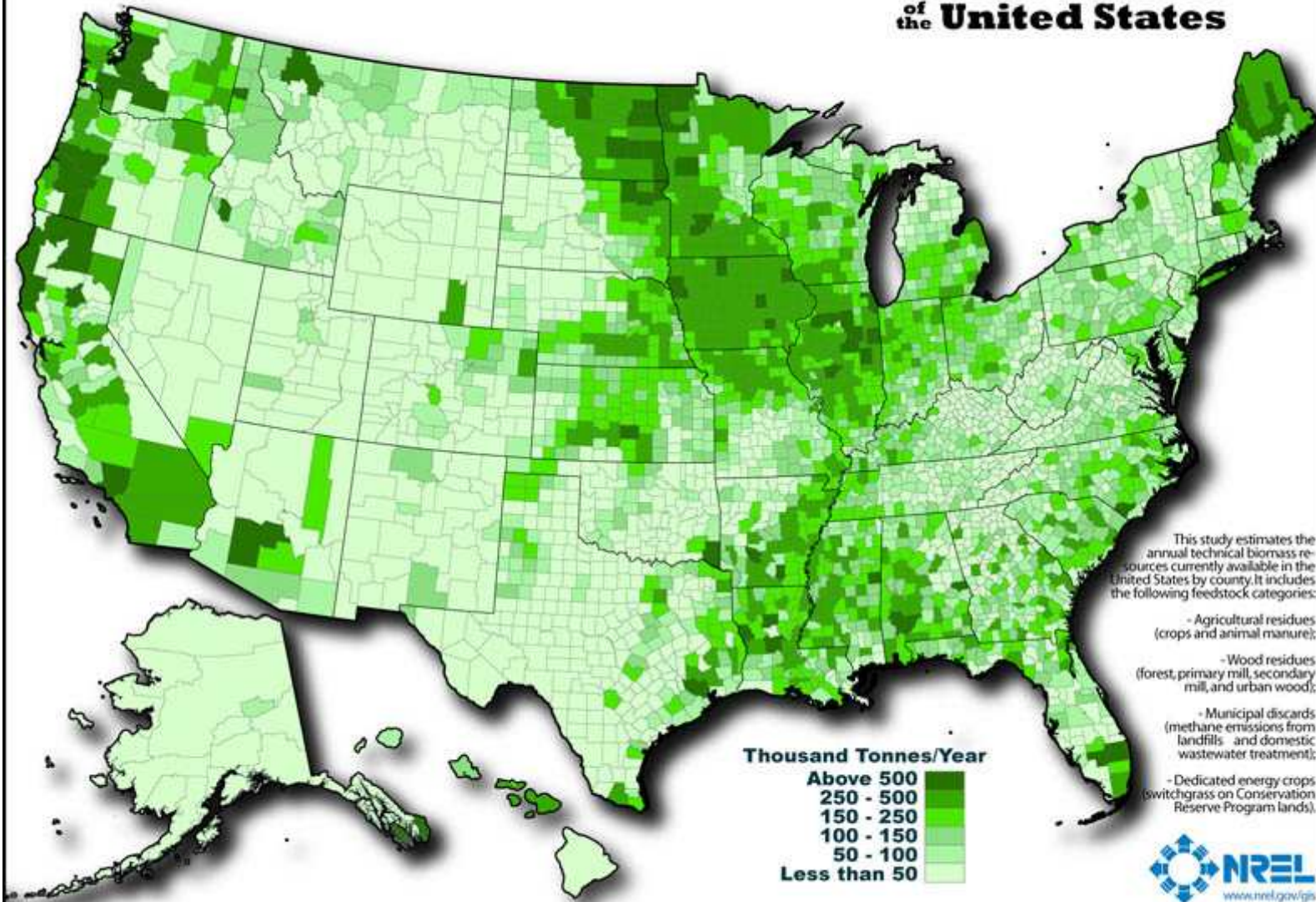
<sup>a</sup>Wind speeds are based on a Weibull k value of 2.0



U.S. Department of Energy  
National Renewable Energy Laboratory

09-MAY-2009 1.1.3

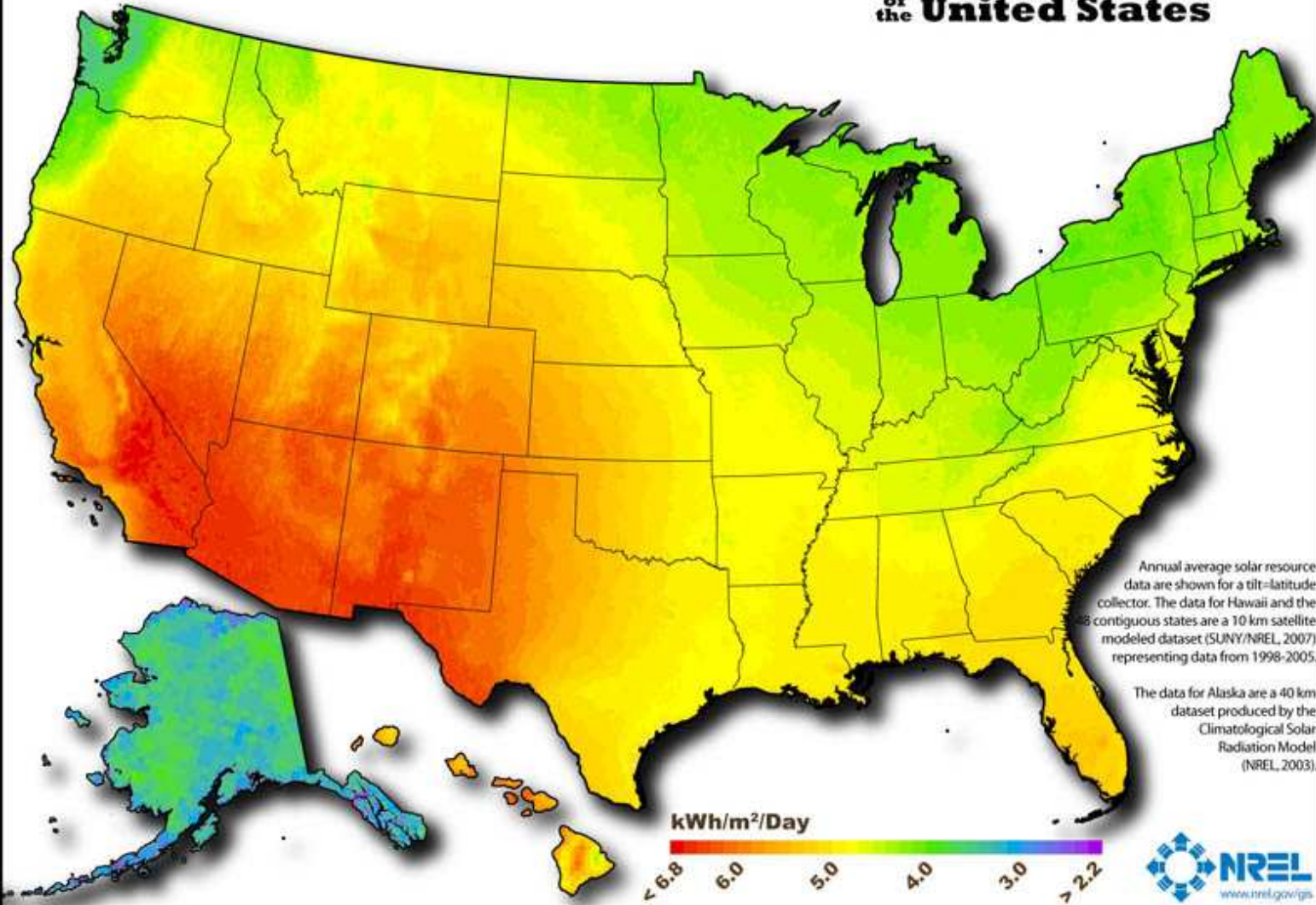
# Biomass Resources of the United States



Author: Billy Roberts - October 20, 2008

This map was produced by the National Renewable Energy Laboratory for the U.S. Department of Energy.  
See additional documentation for more information at <http://www.nrel.gov/docs/fy06osti/39181.pdf>

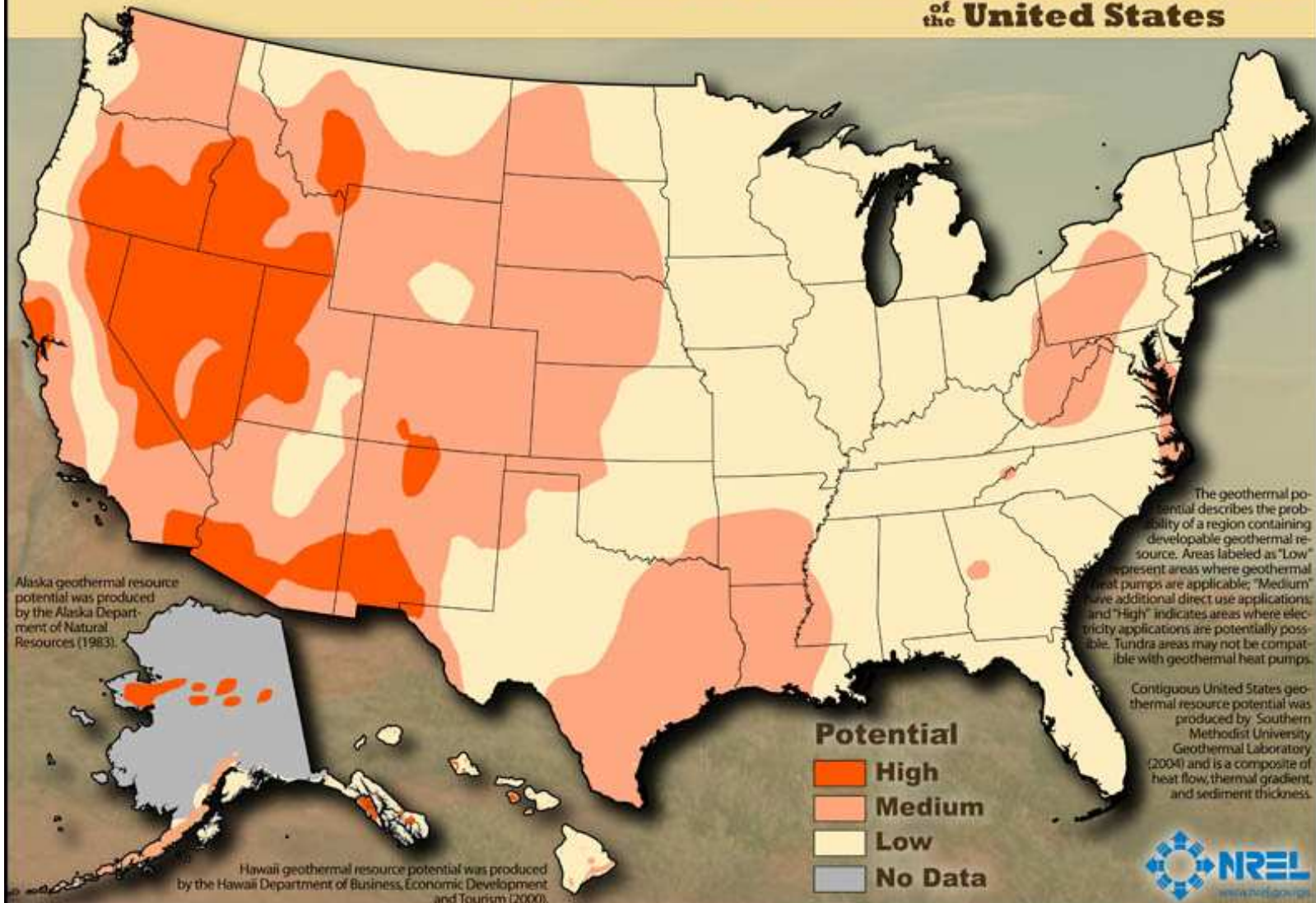
# Photovoltaic Solar Resource of the United States



Author: Billy Roberts - October 20, 2008

This map was produced by the National Renewable Energy Laboratory for the U.S. Department of Energy.

# Geothermal Resources of the United States



Author: Billy Roberts - October 20, 2008

This map was produced by the National Renewable Energy Laboratory for the U.S. Department of Energy.





A **credible** web resource: National Renewable Energy Laboratory  
Geographic Information System (GIS) Interactive maps at  
<http://www.nrel.gov/gis/maps.html>

---



**Energy Information Administration**  
Official Energy Statistics from the U.S. Government

Another credible web resource is the  
Department of Energy's Energy Information  
Administration:  
<http://www.eia.doe.gov/>