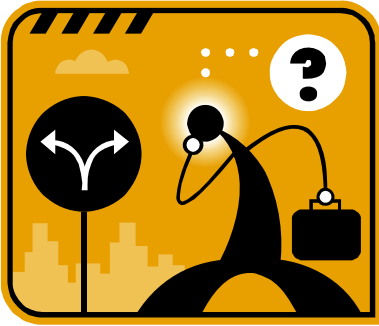


The Wise Choice Process



In the face of any challenge, you can make a responsible decision by answering the six questions of the Wise Choice Process. This process is a variation of a decision-making process developed by Dr. William Glasser. (*On Course: Strategies for Creating Success in College and in Life*, p. 35).

1. What's my present situation?

- Identify the problem or difficulty.
- Determine "What exists?" (not "Whose fault is it?")

2. How would I like my situation to be?

- Specify your goal (desired outcome)

3. What are my possible choices?

- Without evaluating, make a list of options.

4. What is the likely outcome of each possible choice?

- Decide how you think each choice is likely to turn out.

5. Which choice(s) will I commit to doing?

- Make a promise to yourself.

6. When & how will I assess my plan?

- Evaluate your results.