

Fieldhouse dream closer to reality

Multipurpose facility being designed with community in mind

Hope's effort to build a multipurpose spectator facility has entered a new phase with the college seeking local support for the project, which is being planned with community use in mind.

Hope announced the community phase of fund-raising for the DeVos Fieldhouse on Tuesday, July 9, during a press conference held at the former Western Foundry site at Fairbanks Avenue and 8th Street. Demolition of the vacated factory, which the college purchased in late June, has already started in conjunction with the project.

"We are very pleased to be sufficiently far along with our fund-raising to announce that this is a project that is going to happen," said President James Bultman '63. "There is a considerable ways to go yet on the fund-raising part of it and also with the acquisition of some properties, but we will continue to work diligently on addressing both of these matters."

A total of \$13.5 million has already been raised or pledged for the anticipated \$20 million project, which is part of the *Legacies: A Vision of Hope* capital campaign. The college hopes to raise \$1.5 million from the community as it seeks the final \$6.5 million for the facility.

"At the present time, we want very much to give people in the community an opportunity to participate as they are able and as they desire in this project," President Bultman said. "At first blush it may seem since Hope is going to own and operate the facility that this is a building just for Hope College, but that's never the way that we envisioned it. The intention from the beginning has been to share this building with the

Holland community."

"There is little doubt this facility will be great for Hope—but I honestly believe it will be even better for the Holland community," he said. "The setting and the facility will totally transform the eastern gateway to the campus and the community. Importantly for the people and businesses in Holland, this project will come with no tax or bonding implications as would have been necessary with the defeated Area Center project and as is the case in virtually all community facilities."

The fund-raising effort is being led by Jim Jurries '63 of Holland, who had also chaired the fund-raising efforts for the Area Center project that had been proposed in the latter 1990s. Jurries noted that he believes the fieldhouse will help meet a critical need for the community.

"When President Bultman asked me to volunteer to be the chairperson for this fund-raising effort, I couldn't refuse. The need for a larger and newer spectator facility remains," he said. "Hope College now has the wonderful opportunity to partner with the city of Holland to develop on this site a new entrance to our community."

"I'm excited about what such a facility will add to both Hope College and the Holland community," Jurries said. "With a team of community volunteers, we hope to raise sufficient funds to make the dream a reality."

The facility is being designed to help enhance downtown's "Eastern Gateway," and according to President Bultman the site plan will emphasize green space and attractive landscaping in an open, park-like setting. The building, designed to seat up to 3,500, is being named in recognition of a \$7.5 million anchor gift from the Richard and Helen DeVos Foundation.

Hope plans to begin construction in the fall of 2003, with completion planned for late in the fall of 2004.

Holland Mayor Al McGeehan '66 noted



Participants in one of the summer's Hope basketball camps joined in the announcement of the community fund-raising phase for the DeVos Fieldhouse project. Uses envisioned for the multi-purpose spectator facility include Hope and area high school athletic contests, graduations, concerts, Tulip Time activities and other community events.

that he has been pleased since the project was proposed last spring by the emphasis the college has placed on the community in its planning.

"From the first time I heard of this announcement, I heard 'This is for Hope, this is for Holland Christian, and it's for the greater Holland community,'" he said. "We need to remember that. We need to celebrate that as we stand here together."

"I know, whether we are alumni of Hope or other schools, whether we've lived in Holland all of our lives or just moved here fairly recently, this facility will become a showplace and a showcase of how Hope and Holland build together—for the future, just as we have built in the past," McGeehan said.

The college is currently developing program statements that will consider college needs and community use. Potential uses include intercollegiate athletic events, sports events for local high schools, graduations, concerts, Tulip Time events and other community events. President Bultman noted, for example, that he intends for the building to host Holland Christian's basketball games, particularly as future renovation activity will make the Civic Center unavailable.

Hope teams expected to call the building home include men's basketball, volleyball and women's basketball.

The fieldhouse will provide the first on-campus home court for the men's basketball team in more than 70 years. Hope has played its men's basketball games at the Holland Civic Center since the 1954-55 season. The team has not played its home games in an on-campus facility since the 1929-30 season, when it moved from the Carnegie Schouten gymnasium to the Holland (National Guard) Armory, where games were played until the Civic Center was built.

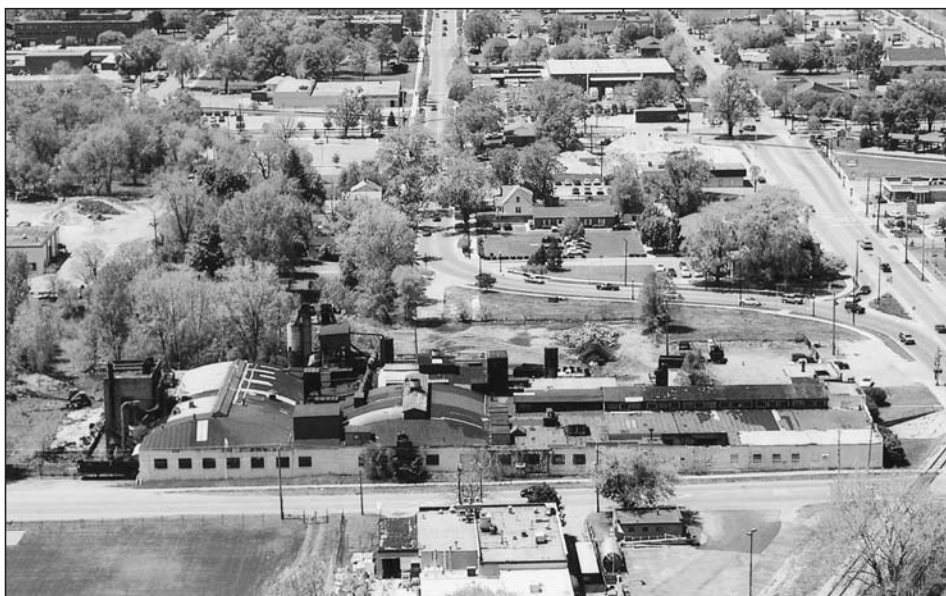
The Dow Health and Physical Education Center, opened on the Hope campus in 1978, was designed as an activity-oriented facility,

and has served to a limited degree as a spectator facility for sports including swimming, volleyball and women's basketball.

McGeehan celebrated the importance of the athletic venues that have preceded the fieldhouse, and also celebrated the foundry itself, and the role that it and its employees played in the community. The business operated for most of the 20th century. It began as the Superior Foundry Company in 1916, and was purchased by Western Foundry Company of Chicago, Ill., in 1920. It closed in the fall of 2001.

"We don't forget the old memories, but it's time that we start to build some new memories for a new generation of young men and women who are going to have the joy of recreating in a much-needed new facility," he said.

The college announced the spectator facility project and the leadership gift from the Richard and Helen DeVos Foundation, the largest gift ever given to Hope for a capital project, in March of 2001.



The new fieldhouse will be built on the former Western Foundry site property purchased by the college in late June. The factory stands just across Fairbanks Avenue (foreground) where Ninth Street curves into Eighth. The main campus is out of view at top left.

LEGACIES

A VISION  OF HOPE

Legacies: A Vision of Hope is a \$105 million fund-raising effort that has four primary components: renovating and expanding the science center, constructing the DeVos Fieldhouse, increasing the endowment, and addressing short-term and long-term facility and space needs.

Thus far, the campaign has raised \$89 million.

For more information about the campaign, please visit the college on-line at www.hope.edu or call (616) 395-7783.